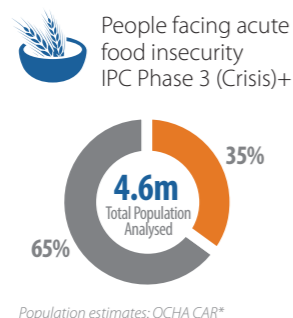
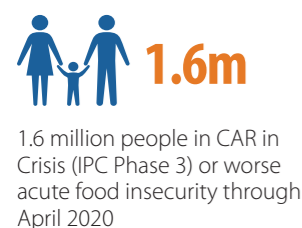


Key Figures



1.6 million people in CAR in Crisis (IPC Phase 3) or worse acute food insecurity through April 2020



Key Drivers

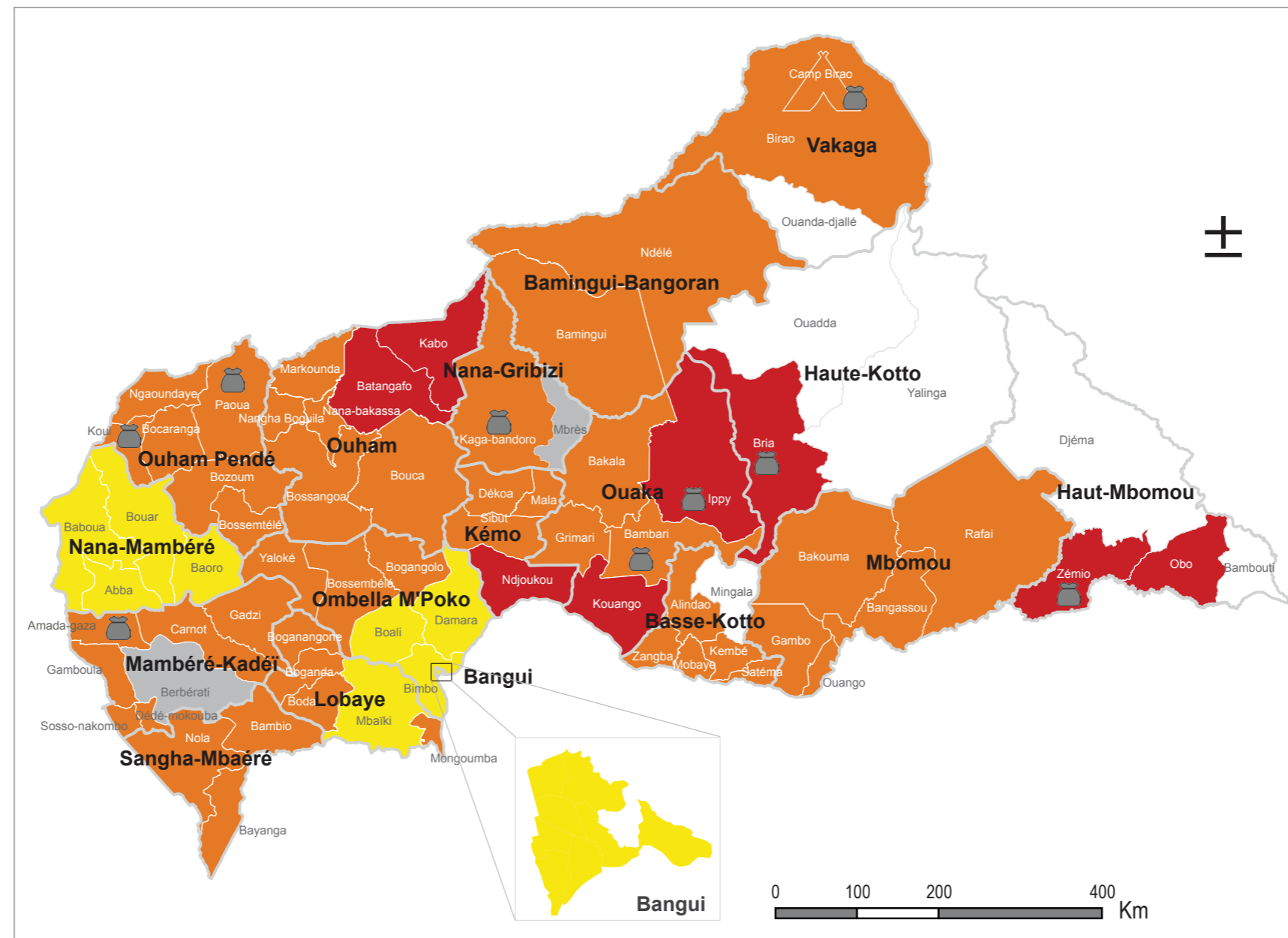
- Conflicts**
The presence of armed groups and inter-community conflicts persist, particularly in border areas.
- Displacement**
The renewed activity of armed groups in much of the country and the precarious insecurity are leading to pendulum movements of populations.
- High prices**
Seasonal price increases, particularly in the city of Bangui, and low household purchasing power, will reduce their access to food consumption.

Overview

In the period from September 2019 to April 2020, corresponding to the post-harvest period in most of the country's agro-climatic zones, it is estimated that despite planned food assistance, the sub-prefectures of Obo, Zémio, Bria, Ndjoukou, Ippy, Kouango, Batangafo and Kabo are in Emergency (IPC Phase 4), while 47 sub-prefectures are in Crisis (IPC Phase 3). 1.6 million people, representing 35% of the population analysed (4.6 million), are severely acutely food insecure, including 375,000 (nearly 10%) in Emergency situations. During the lean season, between May and August 2020, in the absence of food assistance, it is estimated that 2.1 million people, representing 47% of the population analysed, will be severely acutely food insecure, including more than 675,000 people in Emergency situations. In total, 1.6 million people in the current period and 2.1 million people in the projected period are in urgent need of action to save their lives, protect their livelihoods and reduce their food deficits.

Publication date: November 22 2019 | *IPC population data is based on population estimates by OCHA CAR. | ** Displacement estimates are from UNOCHA | Feedback: IPC@FAO.org
Disclaimer: The information shown on this map does not imply official recognition or endorsement of any physical and political boundaries.

Current: Acute Food Security Situation | September 2019 - April 2020



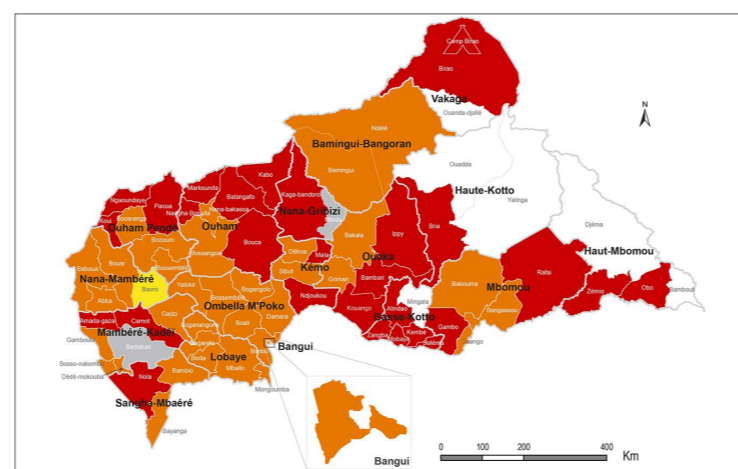
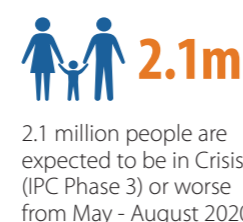
Key for the Map
IPC Acute Food Insecurity Phase Classification

- 1 - Minimal
- 2 - Stress
- 3 - Crisis
- 4 - Emergency
- 5 - Famine
- Areas with inadequate evidence
- Areas not analysed (inaccessible)
- IDPs/other settlements classification

Area receives significant humanitarian food assistance (accounted for in Phase classification)

- > 25% of households meet 25-50% of caloric needs through assistance
- > 25% of households meet > 50% of caloric needs through assistance

Projection: Acute Food Security Situation | May - August 2020



IPC Analysis Partners:

Partners in the IPC analysis in CAR: This analysis was conducted under the patronage of the Ministry of Agriculture and Rural Development and the participation of some fifty experts from the Administration (Ministries of Agriculture, Planning, Livestock, Hydraulics, Water, Forests, Hunting and Fisheries), the University of Bangui, National NGOs (APAD, ANDE, ASF, CODES, SHD, FJREAS, JUPEDEC, AEPA, APEC, GOD, ADV, AVIDESC, PNRM) and International (ACF, ACTED, OXFAM, PLAN, REACH-Initiative, WHH, IEDA RELIEF), the Food Security Nutrition Cluster, the UN Agencies (FAO, WFP, and OCHA), and FEWS NET, with the technical support of the IPC GSU and financial support from the European Commission and USAID.

Phase Classification Phase 3 & 4 Trend | April 2014 - August 2020

